

Managing key solutions to integrate
TECHNOLOGY & SERVICES



Product Overview

Reliable partner for your instrumentation needs



MSME
MICRO, SMALL & MEDIUM ENTERPRISES
सूक्ष्म, लघु एवं मध्यम उद्यम
OUR STRENGTH • हमारे शक्ति

Ministry of MSME, Govt. of India



Foundation

Established in 2002 by two first technocrats with the vision of “Managing Technology & Services” **MTS**



Head Office

Operating from a 9500 sq. ft. office in Ahmedabad, Gujarat.



Qualified Team

The company employees over 50 qualified professionals across Sales, Marketing, Admin, and Service departments, working together to drive the business forward.



Expertise

Known as “**PROVEN FLOW MEASUREMENT EXPERTS**” in the Process & Analytical Industries, the company has built a reputation for excellence and reliability in their field.



Sales Reach

With a robust sales team, the company has a strong presence across Pan-India, serving clients nationwide.



Certificates

ISO 9001:2015 Certified and MSME Registered



Vision Statement

To be a preferred solutions partner in creating clean, green & energy efficient world.



Mission Statement

Transforming lives with innovative ideas



As a technology developer of Insertion Thermal Mass Flow Meters, LEOMI has a manufacturing facility at Gandhinagar - Gujarat meeting German technology standards that allows us to meet the needs of the industrial applications.

Insertion Thermal Mass Flow Meter

Features

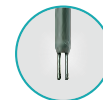
- Wide measuring ranges allow the detection of leakage & increases in consumption
- Measuring mass flow rate independent of pressure and temperature variation
- High accuracy throughout temperature ranges up to 400°C
- Programmable pipe diameters from 15mm to 10000mm
- Probes with $\varnothing=12\text{mm}$ & Length up-to 2000 mm available
- Circular, Square, Rectangular and other ducts mounting possible
- Integration in data network with different data converters possible
- In-built standard gas database for selection
- In-built terminal software with gas volume, gas mixture & insertion depth calculators

Applications

- Primary and secondary combustion air measurement
- Natural gas, Welding gas monitoring & Compressed Air Consumption recording & monitoring
- Aeration Air monitoring in vitalizing basin in wastewater (sewage) treatment plant
- Flue gas stack emissions monitoring



LEOMI-586
INSERTION THERMAL MASS FLOW METER



HALAR[®] Coated



PFA Coated



SS 316Ti / Hastelloy C276
without Safety Head



SS 316Ti with
Safety Head

DIFFERENT MATERIALS FOR CORROSIVE GASES

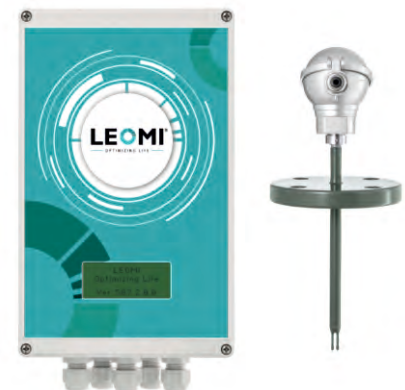
Actual Volume/Mass Flow Meter

Features

- Measuring actual mass/volume flow rate
- Suitable to 15mm to 10000mm pipe size
- Probes with $\varnothing=12\text{mm}/20\text{mm}(\text{HC276})$ & Length up to 2000mm available
- Better accuracy $<\pm 2\%$ RD of actual mass flow rate
- Up to 4 user selectable analogue input such as pressure, temperature, power or RH% etc
- Turnover ratio 100:1 or better
- Accurate measurement over temperature ranges upto 400° C
- In-built data storage with USB 2.0 in cvs format for input parameters
- In-built auto purging system for sensor cleaning
- Ideal for customized flow control application with PC software

Applications

- Waste- to-energy gas - Landfill, Compressed Biogas (CBG) Plant.
- Ventilation air in HVAC for nuclear power & process industries.
- Chemical process corrosive gas vent monitoring
- Zero flare gas monitoring in Oil extraction & refinery plants



LEOMI-587
ACTUAL MASS/VOLUME FLOW METER

Inline Thermal Mass Flowmeter

Features

- Available meter Size 2" (DN 50) to 6" (DN150) upto 14000 Nm³/hr flowrate
- Air/Gas Mass flow meter independent of pressure and temperature variation
- Wide turn down ratio 100:1 (allows leak detection)
- Highest accuracy in it's class $\pm 3\%$ RD
- Sensor design suitable for moist gases & air
- Easy sensor cleaning
- Inline rugged Aluminium or stainless steel body
- I/O Plug-n-play connector

Applications

- Compressed Air Consumption recording & monitoring
- Nitrogen gas, Welding gas, CO₂, O₂, Natural gas and Bio gas flow measurements
- Boiler and Burner flow measurement



LEOMI-581
INLINE THERMAL MASS FLOW METER



Bronkhorst - Netherlands is leader in low flow fluidics handling technology. We offer an extensive product range of thermal, Coriolis and ultrasonic flow meters and controllers for low flow rates of gases and liquids.

Bypass Type Thermal Mass Flowmeter & Controllers

Mass flow Meters and Controllers for gas applications with an electronic housing suitable for laboratory conditions. EL-FLOW® series instruments are truly unique in their capability to control flow ranges between 0...0,7 ml n/min and 0...11000 m3/hr. ranging between vacuum and 400 bar-all in one range of instruments.

Features

- Bypass Technology with Extremely fast & dynam response
- Multi gas / Multirange functionality
- Various model with Pressure range upto 700 bar
- Various protection class available IP54, IP65, ATEX Zone-1 & 2
- User configurable control characteristics

Applications

- Analytical/environmental equipment
- Gas flow monitoring in food, chemical and petrochemical industries
- Gas consumption measurement in gas distribution systems for internal accounting purposes
- Surface treatment installations



IN-FLOW
FLOW RANGE
0,014MLN/MIN
TO 1670 LN/MIN

EL-FLOW SELECT
FLOW RANGE MIN.
0.014MLN ...1670
LN/MIN

Inline Thermal Mass Flowmeter & Controllers

It operates on the direct through-flow measurement principle, also called inline-sensor Constant Temperature Anemometry measuring principle, for mass flow ranges from 0.2 In/min Air (full scale range) up to 10000 In/min Air (full scale range).

Features

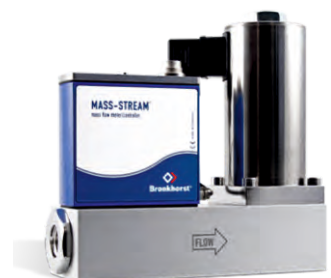
- Useable for virtually every kind of gases
- Compact and robust design with IP65 protection
- Very good repeatability
- Great Price v/s Performance Ratio
- RS232, PROFIBUS DP, FLOW-BUS and Modbus-RTU options available

Applications

- Carburising, Nitriding Furnaces control
- Biogas plant, N2/O2 Generators & Burner controls
- Welding & Medical gases
- Compressed air & Natural gas monitoring



MASS-STREAM
FLOW RANGE
0.01 - 10000 LN/MIN



MASS-STREAM CONTROLLER
FLOW RANGE
0.01 - 10000 LN/MIN

Coriolis Mass & Low Flow Ultrasonic Flowmeter & Controllers

Features

Coriolis Mass Flowmeter

- Direct Mass Flow measurement independent of fluid properties with in-built PID Control
- Flow rates 0.1gm/hr to 600kg/hr, operates upto 400 bar
- High accuracy upto $\pm 0.2\%$ of reading

Low Flow Ultrasonic Flowmeter

- Flow range 4 ... 1500ml/min, depending on e.g. the available pressure drop
- Innovative sensor with fast response time and high accuracy
- Low pressure loss due to the straight SS-316 tube

Applications

Coriolis Mass Flowmeter

- Additive & gas dosing, Flow Chemistry, Micro reactor systems etc.
- Analytical installations (e.g. GC, HPLC or SFC systems)

Low Flow Ultrasonic Flowmeter

- Semiconductor industry
- Pharmaceutical industry & Food industry (flavors, additives)



**CORIOLIS-MASS
FLOW METER**
FLOW RANGE
0...600 KG/H



ES-FLOW
FLOW RANGE
2-1500 ML/MIN



Katronic - UK's excellent reputation has been built on offering accurate and intuitive clamp-on flow meters supported by market-leading customer service and technical support.

Non-Contact Ultrasonic Hand-Held Clamp-On Flowmeter

Features

- Lightweight and tactile for easy one-handed use
- Stainless steel sensors, cable and connectors as standard
- Pipe diameter range 10 mm to 6,500 mm
- Temperature range for sensors -30°C to +250°C (-22°F to +482°F)
- Robust IP 65 enclosure with added rubber shock protector
- Selectable three-line LCD display and full keypad
- Battery life up to 24 hours with standard NiMH AA batteries for simple replacement

Applications

- Pump testing and inspection, Testing of heating circuit, Balancing of heat exchangers
- Measurement of sterile fluids in pharmaceutical
- Clean in process (CIP) system testing & Measurement of raw ingredients and finished product in food production
- Water and Wastewater industry
- Monitoring of hydraulic systems
- Leakage and blockage detection



**KATflow 200 Hand-Held
Clamp-On Ultrasonic
Flowmeter**

TEMPERATURE RANGE
30 °C TO +250 °C



**KATflow 230 Flexible
Clamp-On Ultrasonic
Flowmeter**

TEMPERATURE RANGE
30 °C to +250 °C

Advanced Clamp-On Ultrasonic Flowmeter

Features

- Dual flow monitoring with sum, average, difference and maximum calculations
- Process outputs including current, open-collector, relay
- Communication options RS 485, Modbus RTU and HART* compatible output
- Current inputs for temperature, pressure and density compensation
- Pipe diameter range 10 mm to 6,500 mm
- Temperature range for sensors -30 °C to +250 °C (-22 °F to +482 °F), **higher temperatures available on request**

Applications

- Cooling systems on injection moulding machines and Measurement of paint flows in Manufacturing and Process
- Replacement of large bore electromagnetic flowmeters
- Measurement of furnace cooling flows
- Fuel and oil consumption measurements



**KATflow 150 Advanced
Clamp-On Ultrasonic
Flowmeter**

TEMPERATURE RANGE
30 °C to +250 °C



**KATflow 100 Standard
Clamp-On Ultrasonic
Flow Transmitter**

TEMPERATURE RANGE
30 °C to +80 °C

Clamp-On Ultrasonic Flowmeter For Hazardous Areas

Features

- Dual flow monitoring with sum, average, difference and maximum calculations
- IP 68 stainless steel sensors as standard
- Optional current inputs for pressure, temperature and density compensation
- Pipe diameter range 10 mm to 3,000 mm
- Temperature range for sensors -50°C to +115°C (-58°F to +239°F)
- Process output options current, open-collector, relay
- Ex-certified Pt 100 probe for temperature compensation

Applications

- Coiled tubing systems & produced water measurements
- Measurement of corrosive or toxic chemicals
- Marine and Shipbuilding Industry
- Effluent measurement in hazardous areas



**KATflow 170
Explosion-Proof Clamp-On
Ultrasonic Flowmeter**

TEMPERATURE RANGE
50 °C to +115 °C



Flomec - USA provides quality turbine flowmeters, Oval gear flowmeters, turf irrigation flow sensors and other liquid flowmeters for: process chemicals, water, fuels, & oils, dairy and beverage, and many other industrial fluids.

Oval Gear Flowmeter

Features

- Size available from 4 mm (1/8") to 100 mm (4")
- High Accuracy $\pm 0.5\%$ of RD and Repeatability
- True Volumetric measurement Measure low and high viscosity liquids
- Optional mechanical & electronic totaliser, flowrate & batchers available
- ATEX/ PESO Certifications for hazardous area versions in all sizes
- No need for flow conditioning (straight pipe run etc.)
- Flanged and hygienic process connections available

Applications

- Fuels such as Diesel, Furnace Oil, LDO, Crude Oil etc
- Extremely viscous lubricants such as grease, oils etc
- Non-Conductive solvents such as alcohols, xylene, toluene, ethanol etc



**OM SERIES OVAL
GEAR METERS**
FLOWRANGE (1-40 L/min)

**OM SERIES MECHANICAL
FLOWMETER**
FLOWRANGE (1 - 40 L/min)

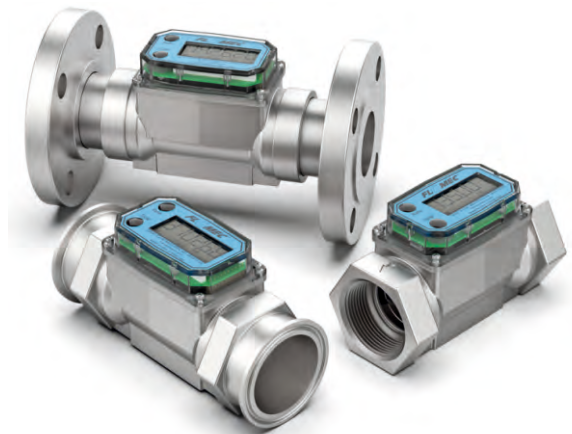
Precision Turbine Meters

Features

- Meter is designed for thin fluids < 100 cp
- Modular design allows for use with Output
- Modules, Sensors and Remote Transmitters
- 2 Totals (Batch = Resettable, Cumulative = Non resettable); Rate of Flow, Factory calibrated in gallons or litres. Field calibratable. Includes nonvolatile totals
- High accuracy meter
- AAA Alkaline battery life: 2 years

Applications

- Batching and Blending
- Food & Beverage Processing
- Fuel & Water Products
- Monitoring Clean and Industrial Fluids
- Plant Process Water
- Plating Solutions
- Chemical Feed Lines
- Ammonium
- Harsh Chemicals (Sulfuric Acid & Bleach)



G2 SERIES (PRECISION TURBINE METERS)
LINE SIZE FROM 0.5" to 2"

Insertion Ultrasonic Flowmeter Saddle

Features

- Advance Technology and simplicity
- High accuracy: $\pm 2.0\%$ of reading (compared to full-scale accuracy)
- Compatible with irrigation controllers (common name brands)
- Protection Structure IP 65
- Provides extended leak detection down to 0.1 fps (0.03 m/s)
- LED light indicators: (green for power and amber for pulse)
- Patented design (QS200)
- Ideal for clean water flow measurement

Applications

- Agriculture Irrigation
- Turf | Landscape Irrigation Systems
- Micro Irrigation Systems
- Groundwater Monitoring
- Sub-Metering Applications: High Rise Tenant Buildings, Apartment Complex, Universities, Commercial Businesses, Processing Facilities



ULTRASONIC IRRIGATION FLOW METER
LINE SIZE FROM 1" to 16"

Differential Pressure based flow metering system

We supply customised Primary Elements



VENTURY



ORIFICE



ANNUBAR



AEROFOIL

Specification

- Differential Pressure, Pressure & Temperature Measurement
- Flow Element such as Orifice Plate / Integral Orifice / Nozzle / Anubar
- Design Standard as per BS-1042 / IS-5167
- Orifice Flange Assembly in CS/MS/ SS / (IBR / Non-IBR)
- Higher pressure ratings up to 60 bar possible
- High temperature up to 600° C possible
- 1: 4 Turn Down Ratio
- $\pm 3\%$ of the system reading Accuracy

Features

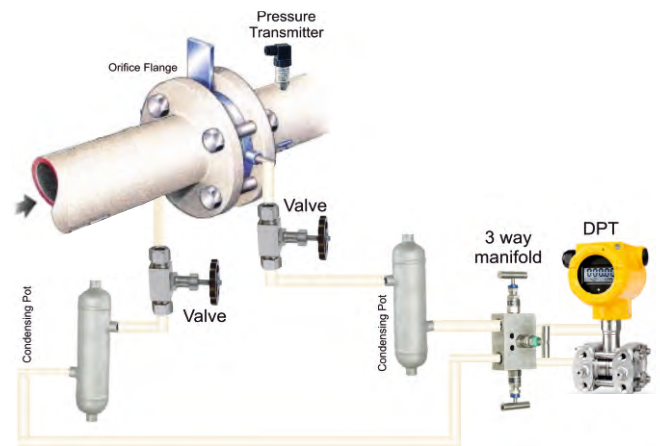
- It provides simple & cost-effective solution
- Proven Mass Flow integrator for density compensation available
- Excellent repeatability
- Rugged design best for harsh environments

Applications

- Thermic fluid, Fuel oils, Chemicals, Steam condensate & Process water in various industries
- Steam, Natural gas, LPG, Bio gas, Compressed air etc in various industries
- Combustion air, Waste gas & Land fill gas etc.

Different MOCs available such as

SS304 , SS316 , SS316L as standard. Hastelloy-C , Monel etc. can be given on request.



DIFFERENTIAL PRESSURE BASED FLOW METERING SYSTEM

Designed Standard as per ISO BS-1042/IS-5167



Aplisens - Poland develops, manufactures and markets components designed exclusively for the measurement of pressure, flow, level, temperature

Pressure Transmitter

Features

- 4...20 mA, 0...20 mA or 0...5 mA output signal + HART 5 / HART 7 protocol
- SIL 2 certificate
- Display with backlight
- Accuracy 0,075% (0,05%, on request)
- Intrinsic safety certificate / Explosion proof certificate (ATEX, IECEx, FM, INMETRO)
- MID (Measuring Instruments Directive) – certificate acc. to 2004/22/WE directive and OIML R140:2007 recommendations.
- Wetted parts material 316L / Hastelloy C276 / Gold plated diaphragm (Au) / Nickel / Titanium / Tantalum / Monel / Teflon1)
- Programmable zero range, shift, characteristic and damping ratio with local panel keys



PRESSURE TRANSMITTER
MEASURING RANGE
0...1000 bar



SMART PRESSURE TRANSMITTER
MEASURING RANGE
0...1380 bar

Differential Pressure Transmitter

Features

- 4...20 mA output signal + HART 5 / HART 7 protocol (special version: 0...20 mA or 0...5 mA output signal + HART 5 protocol)
- Intrinsic safety certificate / Explosion proof certificate (ATEX, IECEx, FM, INMETRO)
- Accuracy 0,075% (0,05%, 0,04% on request)
- Wetted parts material 316L/Hastelloy C276
- Programmable zero range, shift, characteristic and damping ratio with local panel keys
- Static pressure limit up to 700bar



SMART DIFFERENTIAL PRESSURE TRANSMITTER
MEASURING RANGE
0...70 bar



SMART DIFFERENTIAL PRESSURE TRANSMITTER
MEASURING RANGE
0...70 bar

Diaphragm Seals With Various Arrangements



Suitable For Different Application In Industries

- Oil and Gas
- Power plant and Heavy industries
- Paper Industries
- Dairy and Food
- Chemical Industries
- Sugar Industries
- Water treatment Industries



Aplisens - Poland develops, manufactures and markets components designed exclusively for the measurement of pressure, flow, level, temperature

Smart Field Mounted Temperature Transmitter LI-24ALW

Features

- Output signal 4...20mA with Hart protocol
- Galvanic insulation (In, Out)
- Programmable sensor type
- Programmable measuring range
- Thermo resistance line compensation
- Compensation of thermocouple cold junction
- Auto diagnostic system
- Intrinsic safety certificate (ATEX, IECEx)
- Explosion proof certificate (ATEX, IECEx)



SMART TEMPERATURE TRANSMITTER
INPUT SIGNAL : RTD, Thermocouple, Resistance, Voltage

Rail-mounted /head-mounted Smart Temperature Transmitters type LI-24L and LI-24/Ex

Features

- Galvanic insulation (In, out)
- Programmable sensor type
- Programmable measuring range
- Thermo resistance line compensation
- Compensation of thermocouple cold junction
- Output signal 4...20mA + Hart protocol
- Ambient temperature from -25 to +75 °C
- Rail mounting system
- Auto diagnostic system
- Hart protocol
- ATEX certificate (LI-24/Ex)



RAIL-MOUNTED SMART TEMPERATURE TRANSMITTERS TYPE

INPUT SIGNAL : RTD, Thermocouple, Resistance, Voltage



HEAD-MOUNTED TEMPERATURE TRANSMITTER TYPE

INPUT SIGNAL : RTD, Thermocouple, Resistance, Voltage

Hart Communicator

Features

- Input Pt100, Pt500, Pt1000 or K, S, J, T, N, R, B, E
- 2 settable relay outputs: 1 A, 250 V AC
- Power supply 85...260 v AC/DC
- Monitor process variables
- Configure range and units
- Transmitter calibration in relation to master pressure



HART COMMUNICATION TOOL

Others



Display WW-30, WW-30T

- 4...20mA or 0...20mA current input (WW-30)
- 0..5V, 1..5V, 0..10V, 2..10V Voltage input (WW-30)
- Pt100, Resistant input (WW-30T)
- Power supply 230 V AC η 10%



Data logger type PMS-90R

- Up to 8 inputs 0/4 20mA or PT100 / PT500 / PT1000
- 1 digital input for recording release
- 2 relay outputs in standard (optoMOS)
- USB Host port for flush data storage
- RS-485 / Modbus RTU
- Power supply 19V \div 50V DC, 85 \div 260V AC
- Free configuration and recording software

Huba Control

Huba Control - Switzerland develops, manufactures and markets components designed exclusively for the measurement of pressure and flow - pressure switches, sensors and pressure transmitters.

Pressure Transmitter / Switch

Features

- Compact construction
- Automated manufacture in large quantities for ideal price / performance ratio
- Rugged ceramic sensor technology
- No mechanical creepage
- High resistance to extreme temperatures

Applications

- HVAC - Heat Pumps, Chiller, Drinking Water Systems
- Industry Hydraulics applications (e.g. Hydraulic Valves, Actuators, ...)
- Water treatment and Water Irrigation Systems
- Oxygen Distribution Network in Hospital
- Industry - Hydraulics (e.g. Hydraulic Valves, Actuators, ...)
- Food and Beverage processing applications



PRESSURE SENSOR
PRESSURE RANGE
1 ... 1000 bar

Differential Pressure Transmitter / Switch

Features

- Robust construction, sensor element has no contact with media
- High over pressure safety margin, even in the lowest pressure range
- Rugged measured value detector, owing to outstanding synergy obtained by combining diaphragm technology with a ceramic element
- Easy to install and commission
- No maintenance required
- High Protection standard

Applications

- HVAC - Gas / Oil / Biomass Boilers, Furnaces and Burners applications
- Industry - Cooking Centers / Combi Steamer
- Air Handling Units
- Water - Reverse Osmosis / Disinfection / Filtration Units



DIFFERENTIAL PRESSURE TRANSMITTER
PRESSURE RANGE
5 ... 10000 mbar

Vortex Flow Sensor

Features

- Flow measuring with voltage, current, pulse or frequency output
- Temperature non-sensitive measuring principle
- Excellent media resistance (measuring element not in contact with the media)
- Available with temperature measurement
- Excellent EMC capacity by reinforcement on measuring cell
- Measuring element not sensitive to debris
- Direct temperature measurement in the medium
- Drinking water approval

Applications

- HVAC - Heat Pumps
- Fresh water station (Drinking Water) and Storage Water Tank
- Solar Heating / Cooling
- Building Automation - Heating / Cooling Water Distribution
- Industrial Cooling - Tooling Machines (Cutting, Injection Molding, ...)
- Liquids Filling / Dispensing Equipment (Bottling, Canning, Dosing, ...)



VORTEX FLOW SENSOR
PRESSURE RANGE
0.5 ... 240 l/min



Testo - Germany is a world market leader in design, development and manufacturing of portable and stationary measurement solutions since 55 years.

Thermal Imager

- Resolution: 320x240 pixels / Thermal sensitivity <50 mK at +30°C
- Measuring range: -20 to +100°C; 0 to +350°C / Upgradable to 550°C
- Movable cursor, two point measurement, isotherm function
- Inbuilt digital camera & Laser pointer



Air Velocity & IAQ Measuring Instrument

- Can measure °C, %RRH, CO, Co2, m/s, lux
- Intuitive menu for important applications
- Universal probe handle with Bluetooth
- Memory recall on instrument for up to 7500 measurements



Portable Stack Emission / Fluegas Analyzer

- Measurement upto 4 gases out of O2, CO, Co2, NO, NOx, SOx in single instrument
- Gas dilution ratio for higher concentration
- Automatic flow-controlled gas pump modular gas sampling probes
- Internal data logging



Smart Probes

- For Pressure, Humidity, Air Velocity, DP, Temperature
- Measurement data analyzed and sent via Smart Probes App



Dewpoint Transmitter

- Absorption dryers of compressed air, medical compressed air and nitrogen gas
- Measures dewpoints in the range from -60° Ctd to +30° Ctd
- Auto self-adjustment



Cooking Oil Tester

- Ergonomic and robust design
- With temperature sensor along with TPM
- Clear alarms via backlit display
- HACCP certified



IR Thermometer

- Measuring range up to 1500° C
- 50:1 optics with 4 point laser marking
- Integrated emissivity table
- Integrated memory card USB data transfer
- Connection of external TC-probe
- Automatic detection of emissivity with the help of external probe
- Variant available with humidity measurement



Humidity & Temperature Data Logger

- Two Channel temperature and humidity data logger with internal & external sensor
- Memory capacity: 16000 readings
- Battery life: 3 years
- Transfer to a PC via testo USB interface / SD card / mini DIN USB





Multisensor Systems is a developer and supplier of Water and Air Analyzers specializing in oil in water, hydrocarbon analyzers, oil in water detectors, THM Analyzers and Ammonia Analyzers based in the United Kingdom.

Online VOC / Oil In Water Monitor

Features

- Non-Contact Electronic Nose patented technology unaffected by turbidity, low maintenance, No reagents, and low recurring costs
- Measures both Polycyclic Aromatic Hydrocarbons (PAHS) and VOCS
- High sensitivity: ideal for potable water
- Can be calibrated for specific substances: used to monitor known spills
- Catches VOC chemical spills not just hydrocarbons
- Catches fluorescent and non-fluorescent compounds
- Alarms to SCADA and other communication interfaces

Applications

- Monitor water abstraction points such as raw river water, boreholes and reservoir water
- Detect VOC or Phenols contamination in industrial wastewater effluent discharge
- Monitor drain and stormwater systems for flammable liquids
- Detect VOC breakthrough in carbon beds
- Pre-filtration monitoring for RO Membrane filter protection
- Oil detection in cooling, produced, and processed water



MS-1200
RANGE : 01-3000 ppb



MS-1900
RANGE : 0.1-10 ppm ppb
MS-1700
RANGE : 01-100 ppm

Voc In Gas Analyzer

Features

- Low operating and maintenance costs
- High reliability
- No reagents
- Field proven technology

Applications

- Monitoring of VOCs in gas streams
- Monitoring of drains and effluent discharges
- Detection of explosive gases
- Oil and Fuel Leak Detection
- Odour Control
- Land Remediation

PATENTED ELECTRONIC NOSE WITH AI INTEGRATED TECHNOLOGY WHICH IS NOT AFFECTED BY TURBIDITY



MS-1800
RANGE : 01-1000 ppm



Online Trihalomethane (THM) Monitor For Drinking Water

Features

- Online Total Trihalomethane(THM) Monitoring with ranges from 0 to 200ppb conc.
- **Field Proven Non-contact "e-Nose" Technology**
- Analyze THMs post treatment and in the distribution network
- Monitor THMs post-chlorination for enhanced process control
- High reliability
- No reagent

Applications

- Protection of the drinking water network
- Controlling THM reduction processes
- Regulatory compliance guidance

Industries

- Drinking Water & Waste Water
- Chemical & Petrochemical
- Beverages



MS-2000
RANGE : 05-1000 ppm

MTS SOLUTIONS division will be engaged in providing customized Solutions as per customer's application in various process Industries, mainly as below

Process Industries

- Chemical & Fine-chemical
- Water & Wastewater Treatment Plants
- Defence Research & Allied Industries

Primary Focus Areas

- Water Infrastructure Automation
- Research Process Automation

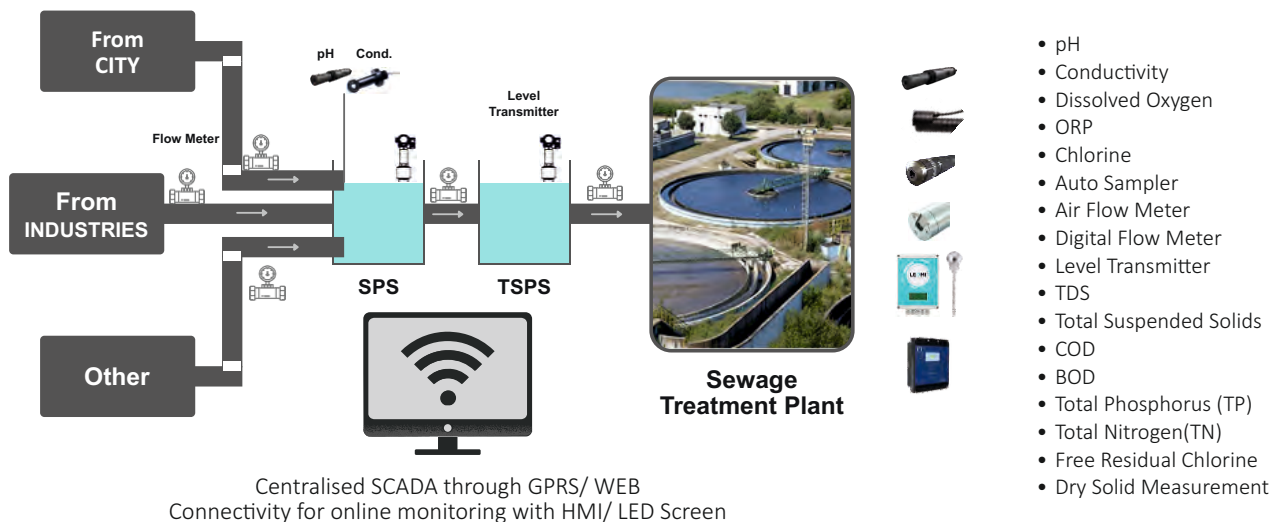
Our Scope

- Application Study
- Hard ware selection (Process Instruments & Automation)
- Software development (PLC, HMI, IIOT)
- Control Panel Manufacturing
- Testing & Commissioning of the panel

Type Of Automations

- AC/DC drives for speed control of motors
- Sequential operations by PLC + HMI+SCADA
- Process control by use of PLC+ HMI+SCADA
- Process calculations by use of PLC+ HMI+SCADA
- Man machine interface / operator control using display & key pads.
- Connectivity to host computers
- Accurate speed and positioning controls with Servo Drives and Motors
- IIOT solutions

INDICATIVE INSTRUMENTS FOR WEB BASED ON LINE MONITORING SYSTEM FOR SPS/TPS/MPS AND STP



Due to industries expectation on improving productivity, process efficiency, preventive maintenance & report generation & analysis, MTS Solutions division involved in developing skills for Industry 4.0 automation as well. We are open to discuss your needs in this domain.

Industries We Serve



Power



Oil & Gas



Metals & Mining



Food & Pharmaceuticals



Textiles



Institutional & Q C Labs



Chemicals

OUR PRESENCE & SALES TEAM

20+

YEARS OF EXPERTISE

50

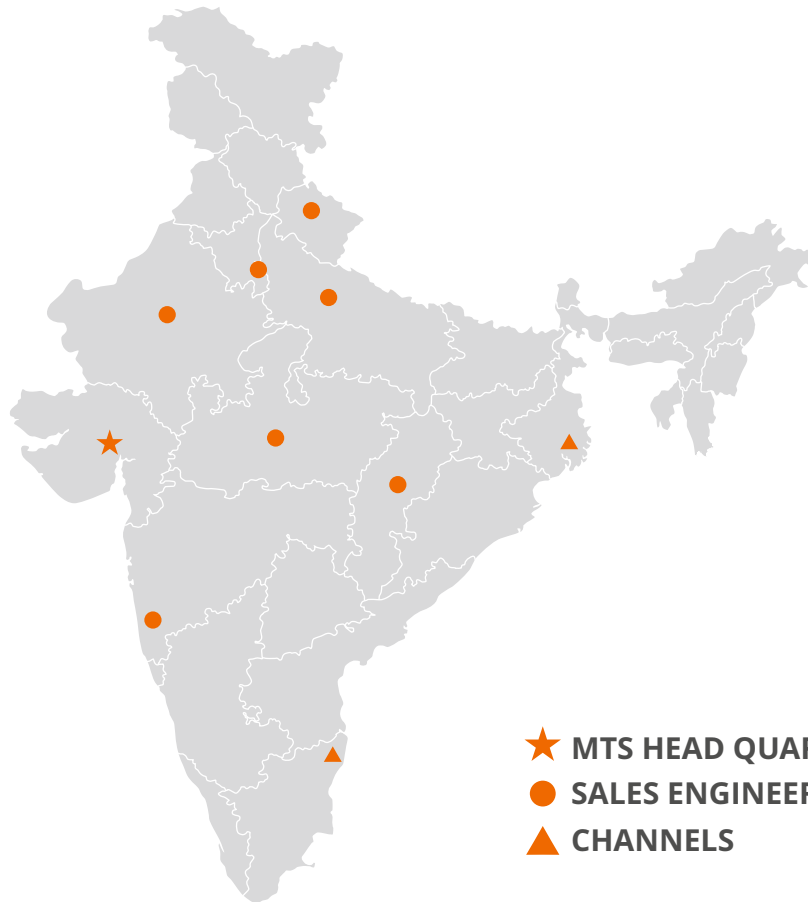
EMPLOYEE STRENGTH

5

SERVICE ENGINEERS
PAN INDIA

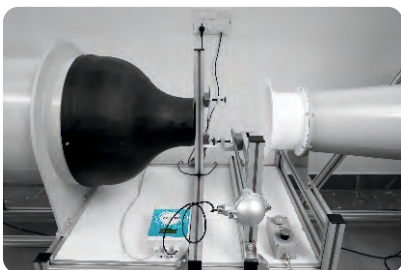
10+

SALES ENGINEERS
PAN INDIA

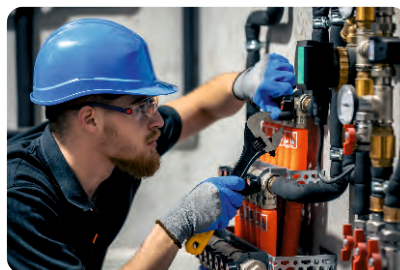


- ★ MTS HEAD QUARTERS
- SALES ENGINEERS
- ▲ CHANNELS

OUR VALUE ADDED SERVICES



IN HOUSE CALIBRATION



COMMISSIONING &
INSTALLATION



PAN INDIA SERVICE



ON SITE SUPPORT



ANNUAL MAINTENANCE
CONTRACT

Power & Energy Industries



Oil & Gas Industries



Steel & Foundry Industries



Automobile & Ancill Industries



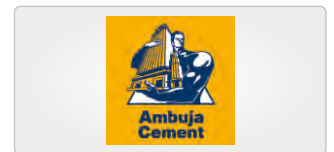
Food & Pharma Industries



Textile Industries



Cement & Mining Industries



Education & Research Industries



Chemical, Plastic & Poly Industries





Innovative Partners



MTS Engineers Pvt. Ltd.
305,306, Shreeya Amalga,
Opp. Avalon Hotel, Thaltej,
AHMEDABAD - 380059, Gujarat, INDIA.

T: +91 79 2640 0063
M: +91 98795 92951/54
E: sales@mtsengineers.com
W: www.mtsengineers.com