

Managing key solutions to integrate  
**TECHNOLOGY & SERVICES**



## Product Overview

Reliable partner for your instrumentation needs



Ministry of MSME, Govt. of India



## Foundation

Established in 2002 by two first technocrats with the vision of “Managing Technology & Services” **MTS**



## Head Office

Operating from a 9500 sq. ft. office in Ahmedabad, Gujarat.



## Qualified Team

The company employees over 50 qualified professionals across Sales, Marketing, Admin, and Service departments, working together to drive the business forward.



## Expertise

Known as “**PROVEN FLOW MEASUREMENT EXPERTS**” in the Process & Analytical Industries, the company has built a reputation for excellence and reliability in their field.



## Sales Reach

With a robust sales team, the company has a strong presence across Pan-India, serving clients nationwide.



## Certificates

ISO 9001:2015 Certified and MSME Registered



## Vision Statement

To be a preferred solutions partner in creating clean, green & energy efficient world.



## Mission Statement

Transforming lives with innovative ideas



As a technology developer of Insertion Thermal Mass Flow Meters, LEOMI has a manufacturing facility at Gandhinagar - Gujarat meeting German technology standards that allows us to meet the needs of the industrial applications.

## Insertion Thermal Mass Flow Meter

### Features

- Wide measuring ranges allow the detection of leakage & increases in consumption
- Measuring mass flow rate independent of pressure and temperature variation
- High accuracy throughout temperature ranges up to 400°C
- Programmable pipe diameters from 15mm to 10000mm
- Probes with  $\varnothing=12\text{mm}$  & Length up-to 2000 mm available
- Circular, Square, Rectangular and other ducts mounting possible
- Integration in data network with different data converters possible
- In-built standard gas database for selection
- In-built terminal software with gas volume, gas mixture & insertion depth calculators

### Applications

- Primary and secondary combustion air measurement
- Natural gas, Welding gas monitoring & Compressed Air Consumption recording & monitoring
- Aeration Air monitoring in vitalizing basin in wastewater (sewage) treatment plant
- Flue gas stack emissions monitoring



LEOMI-586  
INSERTION THERMAL MASS FLOW METER



HALAR Coated



PFA Coated



SS 316Ti / Hastelloy C276  
Without Safety Head



SS 316Ti with  
Safety Head

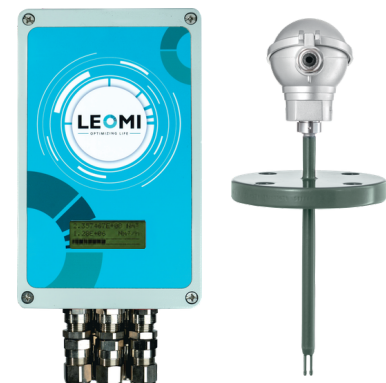
## Actual Volume/Mass Flow Meter

### Features

- Measuring actual mass/volume flow rate
- Suitable to 15mm to 10000mm pipe size
- Probes with  $\varnothing=12\text{mm}/20\text{mm}$  & Length up to 2000mm available
- Better accuracy  $<\pm 2\%$  RD of actual mass flow rate
- Upto 4 user selectable analogue input such as pressure, temperature, power or RH% etc
- Turndown ratio 100:1 or better
- Accurate measurement over temperature ranges upto 400° C
- In-built data storage with USB 2.0 in cvs format for input parameters
- In-built auto purging system for sensor cleaning
- Ideal for customized flow control application with PC software

### Applications

- Waste-to-energy gas - Landfill, Compressed Biogas (CBG) Plant.
- Ventilation air in HVAC for nuclear power & process industries.
- Chemical process corrosive gas vent monitoring
- Zero flare gas monitoring in Oil extraction & refinery plants



LEOMI-587  
ACTUAL MASS/VOLUME FLOW METER

## Inline Thermal Mass Flowmeter

### Features

- Available meter Size 1/2" (DN 15) to 6" (DN150) upto 14000 Nm<sup>3</sup>/hr flowrate
- Air/Gas Mass flow meter independent of pressure and temperature variation
- Wide turn down ratio 100:1 (allows leak detection)
- Highest accuracy in it's class  $\pm 3\%$  RD
- Sensor design suitable for moist gases & air
- Easy sensor cleaning
- Inline rugged Aluminium or stainless steel body
- I/O Plug-n-play connector

### Applications

- Compressed Air Consumption recording & monitoring
- Nitrogen gas, Welding gas, CO<sub>2</sub>, O<sub>2</sub>, Natural gas and Bio gas flow measurements
- Boiler and Burner flow measurement



LEOMI-581  
INLINE THERMAL MASS FLOW METER



Line Tech Co. Ltd. – A South Korean company specializing in Mass Flow Controllers (MFC) and Mass Flow Meters (MFM), delivering reliable and innovative flow control solutions for industrial applications.

## Analogue Mass Flow Controller & Meter

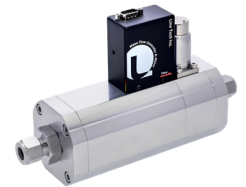
The Line Tech Analogue Mass Flow Controllers and Mass Flow Meters are designed for accurate and reliable gas flow measurement across a wide range of industrial applications.

### Features

- Wide Flow Range from 0.01 slpm to 5000 slpm (N<sub>2</sub>) for diverse gas flow applications
- High Accuracy up to  $\pm 1\%$  /  $\pm 2\%$  FS with  $\pm 0.25\%$  repeatability
- Fast Response Time <2 sec for precise flow monitoring and control
- 0–5Vdc / 4–20mA outputs with +15V to +24Vdc power support
- Reliable operation up to 90 bar and 0–50°C working conditions
- Compact, corrosion-resistant and long-term stable industrial design
- Robust Industrial Construction with corrosion-resistant design and removable sensor technology
- Safe for Hazardous Environments with Ex ec IIC T4 Gc Certification and IP65 Protection Grade
- Accurate Low Flow Measurement with excellent sensitivity and repeatability
- Fast Response Performance with superior linearity and long-term stability



Analogue Mass Flow Meter



Analogue Mass Flow Controller



Ex-Proof Mass Flow Meter & Controller

## Digital Mass Flow Controller

The Line Tech Digital Mass Flow Controllers and Mass Flow Meters are engineered for precise and reliable gas flow measurement in demanding industrial applications.

### Features

- Wide Flow Range from 0.01 slpm to 5000 slpm (N<sub>2</sub>) for precise gas flow applications
- High Accuracy up to  $\pm 0.25\%$  /  $\pm 1\%$  FS with excellent repeatability of  $\pm 0.25\%$
- Ultra-Fast Response Time <1 sec for accurate monitoring and flow control
- RS-485 Communication, 0–5Vdc / 4–20mA outputs and +15V to +24Vdc power support
- Reliable operation up to 90 bar and 0–50°C working conditions
- Compact, stable and long-term reliable design for industrial process applications



Digital Mass Flow Meter



MEMS Tech Mass Flow Controller

## Electronic Pressure Controller & Meter

Line Tech's Electronic Pressure Controller provides precise and reliable gas pressure regulation with high accuracy, fast response and advanced communication capabilities for industrial, laboratory and automation applications.

### Features

- Precise Pressure Control with accuracy up to 0.5% FS and repeatability of 0.25%
- Fast Response Performance for stable and accurate pressure regulation
- Wide Control Range from 2% to 100% of full scale
- Flexible Connectivity with 0–5Vdc / 4–20mA outputs and RS-485 / Modbus RTU communication
- Reliable Industrial Operation with operating pressure up to 6 bar(A) and temperature range 0–50°C
- OLED Display Interface for easy monitoring and parameter configuration
- Robust Construction with excellent linearity, long-term stability and ultra-low leak rate
- **Read Out Box:** MFC/MFM Compatible with Real-Time Flow Display, Flow Control and RS485/RS232 Communication.

## Applications for MFC & EPC

- Analytical & Laboratory Systems
- Biotech, Pharmaceutical, Chemical & Petrochemical Industries
- Semiconductor, Solar & Advanced Manufacturing
- Gas Flow Monitoring, Blending & Distribution Networks
- Furnace, Burner & Surface Treatment Control Systems
- Industrial Process Automation, Leak Detection & Gas Analysis Applications



Electronic Pressure Controller



Read Out Box



Fluidio Sense Pvt Ltd – Indian based company offers precision-engineered flow measurement solutions designed for industrial applications, providing accurate and reliable instruments for diverse process environments.

## Oval Gear Flow Meter

Fluidio's Oval Gear Flow meters are the instruments, invented based on the positive displacement principle considering accuracy and precision as the core of their performance. These volumetric flow meters are best used in industries like oil and petroleum, chemicals, pharmaceuticals, general manufacturing industries where high level of accuracy and repeatability are required.

### Features

- Available in various sizes ranging from DN4 (4mm) to DN80 (80mm)
- Wide Flow Range: 0.7 to 50,000 LPH across multiple meter configurations
- Aluminium & SS316 Construction for robust and long-lasting industrial performance
- Rotor Material Options: Aluminium, Stainless Steel and Polyphenylene Sulfide (PPS) available
- Wide Pressure Capability with Aluminium meters up to 25 bar and SS316 meters up to 200 bar
- Flexible Integration Support with pulse, analog and communication output options

### Applications

- Batching of solvents such as Toluene, Benzene, Xylene etc
- Blending of various oils in proportion
- Liquid Packaging Automations
- Petroleum Products, Oil Products, Chemicals, Grease, Fuels, Pastes, etc.



Oval Gear Flow Meter  
FLOW RANGE  
0.7 LPH TO 50000 LPH

## Electromagnetic Flow Meter

Fluidio's magnetic flow meters deliver accurate, low-cost measurement with no moving parts, ensuring minimal wear and maintenance. Available in various liners, electrodes, and sizes, they suit a wide range of conductive liquids across industries.

### Features

- DN 15 - DN 600 nominal diameter range for versatile industrial applications
- Electrode MOC: SS316L, Hastelloy C, Titanium & Tantalum options available
- Liner Options: PTFE (-20°C to 150°C, 15–300 NB) & Hard Rubber (-10°C to 80°C, 50–600 NB)
- Pressure, temperature, density & viscosity independent measurement with 0.1–15 m/s velocity range
- Maintenance-free design with no moving parts, built-in grounding electrodes and epoxy-coated aluminium transmitter
- Advanced features: High accuracy, bi-directional flow, self-diagnosis, alarms and wireless/data communication support

### Applications

- Ground water wireless flow monitoring for CGWA norms
- Potable water, Raw water, Chilled & Boiler Feed Hot water flow Measurement
- Effluent and sewage water flow measurements
- Various chemical and conductive liquids flow monitoring etc



Electromagnetic Flow Meter  
DIAMETER RANGE  
DN 15 TO DN 600

## Flow Totalizer And Universal Batch Controller

Fluidio offers versatile Flow Indicating Totalizers & Batch Controllers compatible with various flow meters and ideal for integration with SCADA/DCS systems. Widely used across pharmaceutical, chemical, petroleum, and OEM sectors, they ensure precise flow monitoring and reliable process control.

### Specifications

- Display: High Contrast Backlight LCD Display
- Interface: User friendly menu based
- Transmitter Supply: 12VDC | 24 VDC
- Data communication: RS 485 Modbus RTU, SCADA, GPRS
- Power Supply: 230 VAC & 24 VDC / 50 Hz
- Input: Pulse frequency, analogue (4-20mA), Temperature (PT-100)
- Display Variable: Flow rate, total, Pressure, temperature
- Output: Pulse (re transmission), Relay on flow rate & Total (3 Amp 230VAC & 6 Amp 24 VDC), 4-20 mA



Flow Totalizer And Universal  
Batch Controller



Flomec - USA provides quality turbine flowmeters, Oval gear flowmeters, turf irrigation flow sensors and other liquid flowmeters for: process chemicals, water, fuels, & oils, dairy and beverage, and many other industrial fluids.

## Oval Gear Flowmeter

### Features

- Size available from 4 mm (1/8") to 100 mm (4")
- High Accuracy  $\pm 0.5\%$  of RD and Repeatability
- True Volumetric measurement Measure low and high viscosity liquids
- Optional mechanical & electronic totaliser, flowrate & batchers available
- ATEX/ PESO Certifications for hazardous area versions in all sizes
- No need for flow conditioning (straight pipe run etc.)
- Flanged and hygienic process connections available

### Applications

- Fuels such as Diesel, Furnace Oil, LDO, Crude Oil etc
- Extremely viscous lubricants such as grease, oils etc
- Non-Conductive solvents such as alcohols, xylene, toluene, ethanol etc



OM SERIES OVAL  
GEAR METERS  
FLOWRANGE (1-40 L/min)



OM SERIES MECHANICAL  
FLOWMETER  
FLOWRANGE (1 - 40L/min)

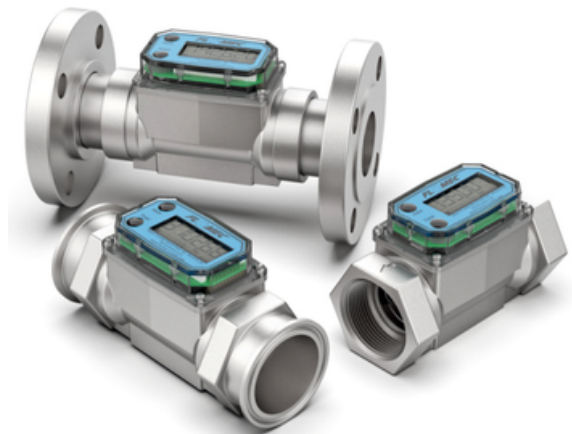
## Precision Turbine Meters

### Features

- Meter is designed for thin fluids < 100 cp
- Modular design allows for use with Output Modules, Sensors and Remote Transmitters
- 2 Totals (Batch = Resettable, Cumulative = Non resettable); Rate of Flow, Factory calibrated in gallons or litres. Field calibratable. Includes nonvolatile totals
- High accuracy meter
- AAA Alkaline battery life: 2 years

### Applications

- Batching and Blending
- Food & Beverage Processing
- Fuel & Water Products
- Monitoring Clean and Industrial Fluids
- Plant Process Water
- Plating Solutions
- Chemical Feed Lines
- Ammonium
- Harsh Chemicals (Sulfuric Acid & Bleach)



G2 SERIES (PRECISION TURBINE METERS)  
LINESIZE FROM 0.5" to 2"

## Insertion Ultrasonic Flowmeter Saddle

### Features

- Advance Technology and simplicity
- High accuracy:  $\pm 2.0\%$  of reading (compared to full-scale accuracy)
- Compatible with irrigation controllers (common name brands)
- Protection Structure IP 65
- Provides extended leak detection down to 0.1 fps (0.03 m/s)
- LED light indicators: (green for power and amber for pulse)
- Patented design (QS200)
- Ideal for clean water flow measurement

### Applications

- Agriculture Irrigation
- Turf | Landscape Irrigation Systems
- Micro Irrigation Systems
- Groundwater Monitoring
- Sub-Metering Applications: High Rise Tenant Buildings, Apartment Complex, Universities, Commercial Businesses, Processing Facilities



ULTRASONIC IRRIGATION FLOW METER  
LINE SIZE FROM 1" to 16"



Katronic - UK's excellent reputation has been built on offering accurate and intuitive clamp-on flow meters supported by market-leading customer service and technical support.

## Non-Contact Ultrasonic Hand-Held Clamp-On Flowmeter

### Features

- Lightweight and tactile for easy one-handed use
- Stainless steel sensors, cable and connectors as standard
- Pipe diameter range 10 mm to 6,500 mm
- Temperature range for sensors -30°C to +250°C (-22°F to +482°F)
- Robust IP 65 enclosure with added rubber shock protector
- Selectable three-line LCD display and full keypad
- Battery life up to 24 hours with standard NiMH AA batteries for simple replacement

### Applications

- Pump testing and inspection, Testing of heating circuit, Balancing of heat exchangers
- Measurement of sterile fluids in pharmaceutical
- Clean in process (CIP) system testing & Measurement of raw ingredients and finished product in food production
- Water and Wastewater industry
- Monitoring of hydraulic systems
- Leakage and blockage detection



KATflow 200 Hand-Held  
Clamp-On Ultrasonic  
Flowmeter  
TEMPERATURE RANGE  
30 °C TO +250 °C



KATflow 230 Flexible  
Clamp-On Ultrasonic  
Flowmeter  
TEMPERATURE RANGE  
30 °C to +250 °C

## Advanced Clamp-On Ultrasonic Flowmeter

### Features

- Dual flow monitoring with sum, average, difference and maximum calculations
- Process outputs including current, open-collector, relay
- Communication options RS 485, Modbus RTU and HART\* compatible output
- Current inputs for temperature, pressure and density compensation
- Pipe diameter range 10 mm to 6,500 mm
- Temperature range for sensors -30 °C to +250 °C (-22 °F to +482 °F), higher temperatures available on request

### Applications

- Cooling systems on injection moulding machines and Measurement of paint flows in Manufacturing and Process
- Replacement of large bore electromagnetic flowmeters
- Measurement of furnace cooling flows
- Fuel and oil consumption measurements



KATflow 150 Advanced  
Clamp-On Ultrasonic  
Flowmeter  
TEMPERATURE RANGE  
30 °C to +250 °C



KATflow 100 Standard  
Clamp-On Ultrasonic  
Flow Transmitter  
TEMPERATURE RANGE  
30 °C to +80 °C

## Clamp-On Ultrasonic Flowmeter For Hazardous Areas

### Features

- Dual flow monitoring with sum, average, difference and maximum calculations
- IP 68 stainless steel sensors as standard
- Optional current inputs for pressure, temperature and density compensation
- Pipe diameter range 10 mm to 3,000 mm
- Temperature range for sensors -50°C to +115°C (-58°F to +239°F)
- Process output options current, open-collector, relay
- Ex-certified Pt 100 probe for temperature compensation

### Applications

- Coiled tubing systems & produced water measurements
- Measurement of corrosive or toxic chemicals
- Marine and Shipbuilding Industry
- Effluent measurement in hazardous areas



KATflow 170  
Explosion-Proof Clamp-On  
Ultrasonic Flowmeter  
TEMPERATURE RANGE  
50 °C to +115 °C

## Differential Pressure based flow metering system

We supply customised Primary Elements



VENTURY



ORIFICE



AVERAGING PITOT TUBE



AEROFOIL

### Specification

- Differential Pressure, Pressure & Temperature Measurement
- Flow Element such as Orifice Plate / Integral Orifice / Nozzle / Averaging Pitot Tube
- Design Standard as per BS-1042 / IS-5167
- Orifice Flange Assembly in CS/MS/ SS / (IBR / Non-IBR)
- Higher pressure ratings up to 60 bar possible
- High temperature up to 600° C possible
- 1: 4 Turn Down Ratio
- $\pm 3\%$  of the system reading Accuracy

### Features

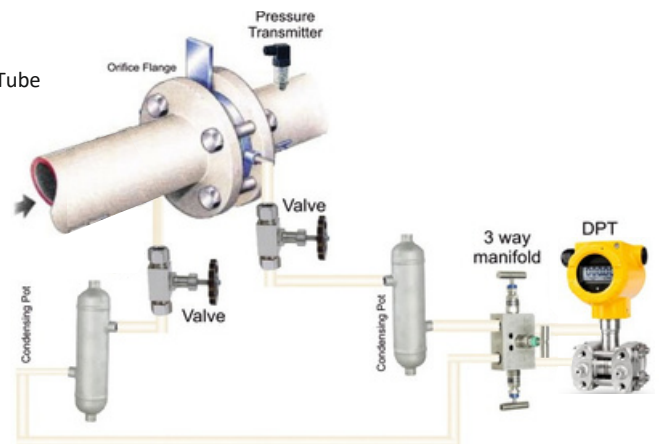
- It provides simple & cost-effective solution
- Proven Mass Flow integrator for density compensation available
- Excellent repeatability
- Rugged design best for harsh environments

### Applications

- Thermic fluid, Fuel oils, Chemicals, Steam condensate & Process water in various industries
- Steam, Natural gas, LPG, Bio gas, Compressed air etc in various industries
- Combustion air, Waste gas & Land fill gas etc.

### Different MOCs available such as

SS304 , SS316 , SS 316 L, Hastelloy C276, Monel etc. can be given on request.



DIFFERENTIAL PRESSURE BASED FLOW METERING SYSTEM

Designed Standard as per BS-1042/IS-5167



Aplisens - Poland develops, manufactures and markets components designed exclusively for the measurement of pressure, flow, level, temperature

## Pressure Transmitter

### Features

- 4...20 mA, 0...20 mA or 0...5 mA output signal + HART 5 / HART 7 protocol
- SIL 2 certificate
- Display with backlight
- Accuracy 0,075% (0,05%, on request)
- Intrinsic safety certificate / Explosion proof certificate (ATEX, IECEx, FM, INMETRO)
- MID (Measuring Instruments Directive) – certificate acc. to 2004/22/WE directive and OIML R140:2007 recommendations.
- Wetted parts material 316L / Hastelloy C276 / Gold plated diaphragm (Au) / Nickel / Titanium / Tantalum / Monel / Teflon1)
- Programmable zero range, shift, characteristic and damping ratio with local panel keys



PRESSURE TRANSMITTER  
MEASURING RANGE  
0...1000 bar



SMART PRESSURE TRANSMITTER  
MEASURING RANGE  
0...1380 bar

## Differential Pressure Transmitter

### Features

- 4...20 mA output signal + HART 5 / HART 7 protocol (special version: 0...20 mA or 0...5 mA output signal + HART 5 protocol)
- Intrinsic safety certificate / Explosion proof certificate (ATEX, IECEx, FM, INMETRO)
- Accuracy 0,075% (0,05%, 0,04% on request)
- Wetted parts material 316L/Hastelloy C276
- Programmable zero range, shift, characteristic and damping ratio with local panel keys
- Static pressure limit up to 700bar



SMART DIFFERENTIAL PRESSURE TRANSMITTER  
MEASURING RANGE  
0...70 bar



SMART DIFFERENTIAL PRESSURE TRANSMITTER  
MEASURING RANGE  
0...70 bar

## Diaphragm Seals With Various Arrangements



## Suitable For Different Application In Industries

- Oil and Gas
- Power plant and Heavy industries
- Paper Industries
- Dairy and Food
- Chemical Industries
- Sugar Industries
- Water treatment Industries



Aplisens - Poland develops, manufactures and markets components designed exclusively for the measurement of pressure, flow, level, temperature

## Smart Field Mounted Temperature Transmitter LI-24ALW

### Features

- Output signal 4...20mA with Hart protocol
- Galvanic insulation (In, Out)
- Programmable sensor type
- Programmable measuring range
- Thermo resistance line compensation
- Compensation of thermocouple cold junction
- Auto diagnostic system
- Intrinsic safety certificate (ATEX, IECEx)
- Explosion proof certificate (ATEX, IECEx)



SMART TEMPERATURE TRANSMITTER  
INPUT SIGNAL : RTD, Thermocouple, Resistance, Voltage

## Rail-mounted /head-mounted Smart Temperature Transmitters type LI-24L and LI-24/Ex

### Features

- Galvanic insulation (In, out)
- Programmable sensor type
- Programmable measuring range
- Thermo resistance line compensation
- Compensation of thermocouple cold junction
- Output signal 4...20mA + Hart protocol
- Ambient temperature from -25 to +75 °C
- Rail mounting system
- Auto diagnostic system
- Hart protocol
- ATEX certificate (LI-24/Ex)



RAIL-MOUNTED SMART TEMPERATURE TRANSMITTERS TYPE  
INPUT SIGNAL : RTD, Thermocouple, Resistance, Voltage



HEAD-MOUNTED TEMPERATURE TRANSMITTER TYPE  
INPUT SIGNAL : RTD, Thermocouple, Resistance, Voltage

## Hart Communicator

### Features

- Input Pt100, Pt500, Pt1000 or K, S, J, T, N, R, B, E
- 2 settable relay outputs: 1 A, 250 V AC
- Power supply 85...260 v AC/DC
- Monitor process variables
- Configure range and units
- Transmitter calibration in relation to master pressure



HART COMMUNICATION TOOL

## Others



### Display WW-30, WW-30T

- 4...20mA or 0...20mA current input (WW-30)
- 0..5V, 1..5V, 0..10V, 2..10V Voltage input (WW-30)
- Pt100, Resistant input (WW-30T)
- Power supply 230 V AC ± 10%



### Data logger type PMS-90R

- Upto 8 inputs/0/420mA or PT100/ PT500 / PT1000
- 1 digital input for recording release
- 2 relay outputs in standard (optoMOS)
- USB Host port for flush data storage
- RS-485 / Modbus RTU
- Power supply 19V ÷ 50V DC, 85 ÷ 260V AC
- Free configuration and recording software

**Huba Control**

Huba Control - Switzerland develops, manufactures and markets components designed exclusively for the measurement of pressure and flow - pressure switches, sensors and pressure transmitters.

## Pressure Transmitter / Switch

### Features

- Compact construction
- Automated manufacture in large quantities for ideal price / performance ratio
- Rugged ceramic sensor technology
- No mechanical creepage
- High resistance to extreme temperatures

### Applications

- HVAC - Heat Pumps, Chiller, Drinking Water Systems
- Industry Hydraulics applications (e.g. Hydraulic Valves, Actuators, ...)
- Water treatment and Water Irrigation Systems
- Oxygen Distribution Network in Hospital
- Industry - Hydraulics (e.g. Hydraulic Valves, Actuators, ...)
- Food and Beverage processing applications



**PRESSURE SENSOR**  
PRESSURE RANGE  
1 ... 1000 bar

## Differential Pressure Transmitter / Switch

### Features

- Robust construction, sensor element has no contact with media
- High over pressure safety margin, even in the lowest pressure range
- Rugged measured value detector, owing to outstanding synergy obtained by combining diaphragm technology with a ceramic element
- Easy to install and commission
- No maintenance required
- High Protection standard

### Applications

- HVAC - Gas / Oil / Biomass Boilers, Furnaces and Burners applications
- Industry - Cooking Centers / Combi Steamer
- Air Handling Units
- Water - Reverse Osmosis / Disinfection / Filtration Units



**DIFFERENTIAL PRESSURE TRANSMITTER**  
PRESSURE RANGE  
5 ... 10000 mbar

## Vortex Flow Sensor

### Features

- Flow measuring with voltage, current, pulse or frequency output
- Temperature non-sensitive measuring principle
- Excellent media resistance (measuring element not in contact with the media)
- Available with temperature measurement
- Excellent EMC capacity by reinforcement on measuring cell
- Measuring element not sensitive to debris
- Direct temperature measurement in the medium
- Drinking water approval

### Applications

- HVAC - Heat Pumps
- Fresh water station (Drinking Water) and Storage Water Tank
- Solar Heating / Cooling
- Building Automation - Heating / Cooling Water Distribution
- Industrial Cooling - Tooling Machines (Cutting, Injection Molding, ...)
- Liquids Filling / Dispensing Equipment (Bottling, Canning, Dosing, ...)



**VORTEX FLOW SENSOR**  
PRESSURE RANGE  
0.5 ... 240 l/min



Multisensor Systems is a developer and supplier of Water and Air Analyzers specializing in oil in water, hydrocarbon analyzers, oil in water detectors, THM Analyzers and Ammonia Analyzers based in the United Kingdom.

## Online VOC / Oil In Water Monitor

### Features

- Non-Contact Electronic Nose patented technology unaffected by turbidity, low maintenance, No reagents, and low recurring costs
- Measures both Polycyclic Aromatic Hydrocarbons (PAHS) and VOCS
- High sensitivity: ideal for potable water
- Can be calibrated for specific substances: used to monitor known spills
- Catches VOC chemical spills not just hydrocarbons
- Catches fluorescent and non-fluorescent compounds
- Alarms to SCADA and other communication interfaces

### Applications

- Monitor water abstraction points such as raw river water, boreholes and reservoir water
- Detect VOC or Phenols contamination in industrial wastewater effluent discharge
- Monitor drain and stormwater systems for flammable liquids
- Detect VOC breakthrough in carbon beds
- Pre-filtration monitoring for RO Membrane filter protection
- Oil detection in cooling, produced, and processed water

## VOC In Gas Analyzer

### Features

- Low operating and maintenance costs
- High reliability
- No reagents
- Field proven technology

### Applications

- Monitoring of VOCs in gas streams
- Monitoring of drains and effluent discharges
- Detection of explosive gases
- Oil and Fuel Leak Detection
- Odour Control
- Land Remediation

## Online Trihalomethane (THM) Monitor For Drinking Water

### Features

- Online Total Trihalomethane (THM) Monitoring with ranges from 0 to 200ppb conc.
- **Field Proven Non-contact "e-Nose" Technology**
- Analyze THMs post treatment and in the distribution network
- Monitor THMs post-chlorination for enhanced process control
- High reliability
- No reagent

### Applications

- Protection of the drinking water network
- Controlling THM reduction processes
- Regulatory compliance guidance

### Industries

- Drinking Water & Waste Water
- Chemical & Petrochemical
- Beverages



Patented Electronic Nose with AI Integrated Technology which is not affected by Turbidity



MS-1200-S RANGE : 01-3000 ppb  
MS1210-S RANGE : 0.1- 40 ppm  
MS-1220-S RANGE : 01-200 ppm



MS4000-S  
RANGE : 01-3000 ppm



MS-2000-S  
RANGE : 05-200 ppb



Hobré Solutions – Global provider of advanced online analyzers and sampling systems, offering precise and reliable process measurement solutions for enhanced industrial performance and operational efficiency

## CONTINUOUS CO DETECTION SYSTEM

BICOSYS / NICOSYS Continuous CO Detection System is an advanced safety solution for continuous monitoring of carbon monoxide levels in spray drying and powder processing applications. Designed for reliable early fire detection, it provides accurate CO measurement, intelligent alarm management and enhanced process safety with minimal maintenance requirements.

### Features

- Industry-leading performance in applications with high and fluctuating background CO levels
- Unmatched reliability enabled by a unique dual-analyzer configuration available
- Complimentary Remote Health Checks (RHC) provided at 6 and 12 months
- Dynamic regulation of flow and CO alarm thresholds, customized based on client-specific process recipes
- Automated leak detection and flow testing for enhanced system integrity
- Remote accessibility for diagnostics, service, and technical support
- Integrated UPS (Uninterruptible Power Supply) for continuous and reliable operation

### Applications

- Spray Dryers & Drying Process Systems for Skimmed Milk, Whole Milk, Coffee creamers, Infant formulas, Whey permeates, organic flavour, plant based products etc.
- Cyclones, Bag Filters & Exhaust Monitoring
- Food, Dairy & Powder Processing Industries
- Process Safety, Emission Monitoring & Quality Control Systems



BICOSYS



NICOSYS

## CONTINUOUS CO AND MOISTURE DETECTION SYSTEM

HICOSYS Advanced / HICOSYS Aqua – Continuous CO & Moisture Detection System is an advanced monitoring solution designed for continuous measurement of carbon monoxide (CO) and moisture levels in spray drying processes. By combining accurate gas analysis with real-time moisture monitoring, the system enhances process safety, product quality and dryer efficiency while providing reliable operation in demanding industrial environments.

### Features

- Continuous CO & H<sub>2</sub>O Monitoring for spray drying and process safety applications
- Multi-Point Sampling Capability for accurate measurement across multiple process locations
- High Stability Analysis with reliable performance even under fluctuating process conditions
- CIP & ATEX Compatible Probes suitable for hygienic and hazardous environments
- Advanced Alarm, Event Logging & Remote Monitoring for enhanced process control and maintenance
- Flexible Installation Design suitable for all types of spray dryer configurations and process setups

### Applications

- Spray Dryers & Drying Process Systems for Skimmed Milk, Whole Milk, Coffee creamers, Infant formulas, Whey permeates, organic flavour, plant based products etc.
- Cyclones, Bag Filters & Exhaust Monitoring
- Process Safety, Emission Monitoring & Quality Control Systems



HICOSYS Advanced



HICOSYS Aqua



Testo - Germany is a world market leader in design, development and manufacturing of portable and stationary measurement solutions since 55 years.

## Thermal Imager

- Resolution: 320x240 pixels / Thermal sensitivity <50 mK at +30°C
- Measuring range: -20 to +100°C; 0 to +350°C / Upgradable to 550°C
- Movable cursor, two point measurement, isotherm function
- Inbuilt digital camera & Laser pointer



## Air Velocity & IAQ Measuring Instrument

- Can measure °C, %RRH, CO, Co2, m/s, lux
- Intuitive menu for important applications
- Universal probe handle with Bluetooth
- Memory recall on instrument for up to 7500 measurements



## Portable Stack Emission / Fluegas Analyzer

- Measurement upto 4 gases out of O2, CO, Co2, NO, NOx, SOx in single instrument
- Gas dilution ratio for higher concentration
- Automatic flow-controlled gas pump modular gas sampling probes
- Internal data logging



## Smart Probes

- For Pressure, Humidity, Air Velocity, DP, Temperature
- Measurement data analyzed and sent via Smart Probes App



## Dewpoint Transmitter

- Absorption dryers of compressed air, medical compressed air and nitrogen gas
- Measures dewpoints in the range from -60° Ctd to +30° Ctd
- Auto self-adjustment



## Cooking Oil Tester

- Ergonomic and robust design
- With temperature sensor along with TPM
- Clear alarms via backlit display
- HACCP certified



## IR Thermometer

- Measuring range up to 1500° C
- 50:1 optics with 4 point laser marking
- Integrated emissivity table
- Integrated memory card USB data transfer
- Connection of external TC-probe
- Automatic detection of emissivity with the help of external probe
- Variant available with humidity measurement



## Humidity & Temperature Data Logger

- Two Channel temperature and humidity data logger with internal & external sensor
- Memory capacity: 16000 readings
- Battery life: 3 years
- Transfer to a PC via testo USB interface / SD card / mini DIN USB



**MTS SOLUTIONS division will be engaged in providing customized Solutions as per customer's application in various process Industries, mainly as below**

## Process Industries

- Chemical & Fine-chemical
- Water & Wastewater Treatment Plants
- Defence Research & Allied Industries

## Primary Focus Areas

- Water Infrastructure Automation
- Research Process Automation

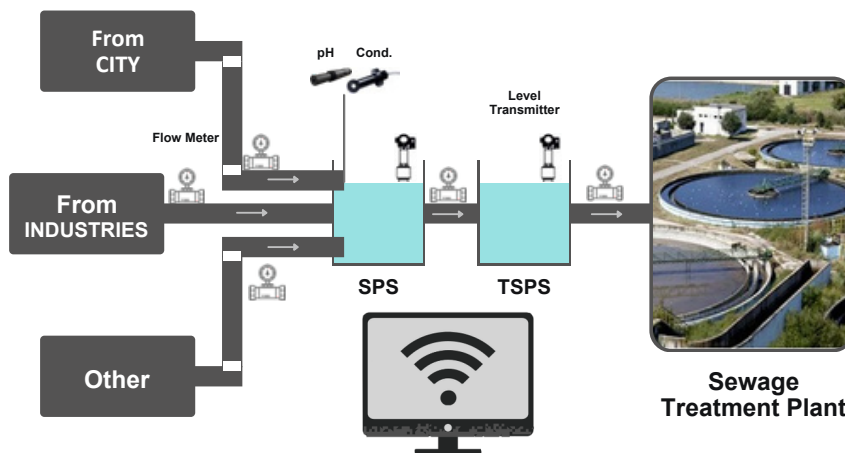
## Our Scope

- Application Study
- Hard ware selection (Process Instruments & Automation)
- Software development (PLC, HMI, IIOT)
- Control Panel Manufacturing
- Testing & Commissioning of the panel

## Type Of Automations

- AC/DC drives for speed control of motors
- Sequential operations by PLC + HMI+SCADA
- Process control by use of PLC+ HMI+SCADA
- Process calculations by use of PLC+ HMI+SCADA
- Man machine interface / operator control using display & key pads.
- Connectivity to host computers
- Accurate speed and positioning controls with Servo Drives and Motors
- IIOT solutions

### INDICATIVE INSTRUMENTS FOR WEB BASED ON LINE MONITORING SYSTEM FOR SPS/TPS/MPS AND STP



- pH
- Conductivity
- Dissolved Oxygen
- ORP
- Chlorine
- Auto Sampler
- Air Flow Meter
- Digital Flow Meter
- Level Transmitter
- TDS
- Total Suspended Solids
- COD
- BOD
- Total Phosphorus (TP)
- Total Nitrogen(TN)
- Free Residual Chlorine
- Dry Solid Measurement

Centralised SCADA through GPRS/ WEB Connectivity for online monitoring with HMI/ LED Screen

Due to industries expectation on improving productivity, process efficiency, preventive maintenance & report generation & analysis, MTS Solutions division involved in developing skills for Industry 4.0 automation as well. We are open to discuss your needs in this domain.

## Industries We Serve



Power



Oil & Gas



Metals & Mining



Food & Pharmaceuticals



Textiles



Institutional & Q C Labs



Chemicals

## OUR PRESENCE & SALES TEAM

**20+**

YEARS OF EXPERTISE

**50**

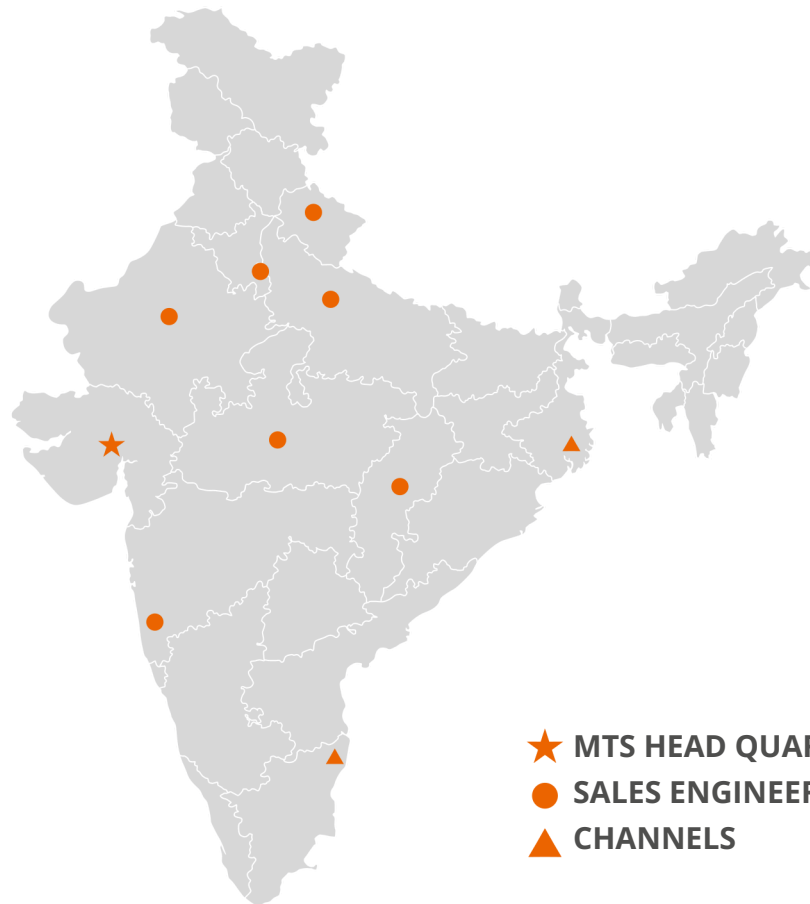
EMPLOYEE STRENGTH

**5**

SERVICE ENGINEERS  
PAN INDIA

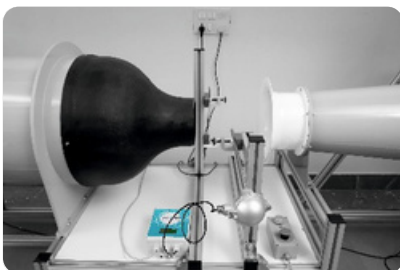
**10+**

SALES ENGINEERS  
PAN INDIA

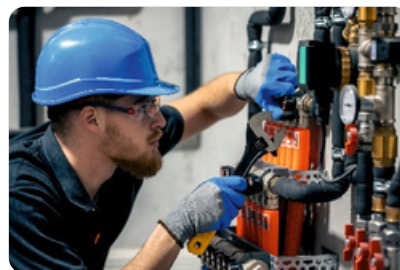


- ★ MTS HEAD QUARTERS
- SALES ENGINEERS
- ▲ CHANNELS

## OUR VALUE ADDED SERVICES



IN HOUSE CALIBRATION



COMMISSIONING &  
INSTALLATION



PAN INDIA SERVICE



ON SITE SUPPORT



ANNUAL MAINTENANCE  
CONTRACT

## Power & Energy Industries



## Oil & Gas Industries



## Steel & Foundry Industries



## Automobile & Ancill Industries



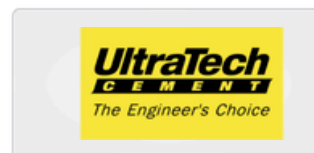
## Food & Pharma Industries



## Textile Industries



## Cement & Mining Industries



## Education & Research Industries



## Chemical, Plastic & Poly Industries





## Innovative Partners



MTS Engineers Pvt. Ltd.  
305,306, Shreeya Amalga,  
Opp. Avalon Hotel, Thaltej,  
AHMEDABAD - 380059, Gujarat, INDIA.

T: +91 79 2640 0063  
M: +91 98795 92951/54  
E: sales@mtsengineers.com  
W: www.mtsengineers.com